

# Transportation Asset Management Webinar Series

## Webinar 11: Managing NHS Assets Not Owned by the State

Sponsored by FHWA and AASHTO

Submit questions and comments using the webinar's Q&A feature



**Webinar 11 — August 12, 2014**

# FHWA-AASHTO Asset Management Webinar Series

- Sharing knowledge is a critical component of advancing asset management practice
- This is the penultimate webinar in a 12-part webinar series that has run over a two-year period
- Webinars are held every two months, on topics such as mitigating and adapting to climate change risks, developing transportation asset management plans, and more
- We welcome ideas for future webinar topics and presentations
- Submit your questions using the webinar's Q&A feature
- Next webinar: **Transportation Asset Management Financial Plans – October 8, 2014 2:00 EST**

# Welcome

- FHWA is pleased to sponsor this webinar on managing NHS assets that are not owned by the state, in cooperation with the AASHTO Sub-Committee on Asset Management
- Today's presentations address a topic that impacts a broad audience
- Under MAP-21, state DOTs will soon be required to develop and implement a risk-based transportation asset management plan
  - This will include those NHS pavements and bridge assets not owned by the state
- FHWA is working to help support the necessary coordination with education and capacity-building efforts

# Non-State Owned NHS Assets

- FHWA Office of Asset Management is committed to helping agencies understand how non-state owned NHS assets can be addressed in an agency's transportation asset management plan
- Key challenges include:
  - Data collection and management
  - Performance measurement and reporting and setting performance targets
  - Resource allocation and investment planning
  - Coordination across agencies
  - Transition to the enhanced NHS
- While there is no one-size-fits-all solution, our speakers today will address some successful approaches to these challenges and others.

# Webinar Overview

---

- Today's presentation includes four perspectives on addressing non-state-owned NHS assets in an agency's transportation asset management plan
- We will hear about the experiences of agencies already engaged in taking on these challenges
- Presentations will highlight both successful approaches and some important lessons learned

# Learning Objectives

- Building working knowledge of key concepts and definitions relevant to the management of non-state owned NHS assets
- Understanding specific approaches to addressing non-state-owned NHS assets in an agency's transportation asset management plan
- Beginning to apply this knowledge in order to answer:
  - How can multiple asset owners coordinate to help improve the management of infrastructure assets?
  - What benefits can states expect by pursuing a coordinated approach to the non-state-owned assets?
  - What are the key lessons-learned for agencies just beginning to manage non-state-owned assets as part of their TAM program?
- **SHARE LESSONS LEARNED, IDEAS, KNOWLEDGE!!!**

# Webinar Agenda

- 2:00 Webinar introduction and overview**  
Matt Hardy (AASHTO), Steve Gaj (FHWA), and Hyun-A Park (Spy Pond Partners, LLC)
- 2:15 New York's Collaborative Approach to Performance Management**  
Brad Allen and Marty Neveu (New York State DOT)
- 2:30 The California Challenge**  
Steve Guenther (California DOT)
- 2:45 Michigan's Asset Management Council**  
Dave Berridge and Brian Sanada (Michigan DOT)
- 3:00 Ohio's State-MPO Relationship**  
Andrew Williams and Tim McDonald (Ohio DOT)
- 3:15 Q&A and wrap up**

# New York's Collaborative Approach to Performance Management





# New York State's Transportation System is a vast and expansive network




**113,000 highway miles**

**130 billion vehicle miles annually**

**17,400 bridges**

**3,500-mile rail network**



**130 public transit operators**

**485 public and private aviation facilities**

**12 major public and private ports**



# Participation in TAMP Development

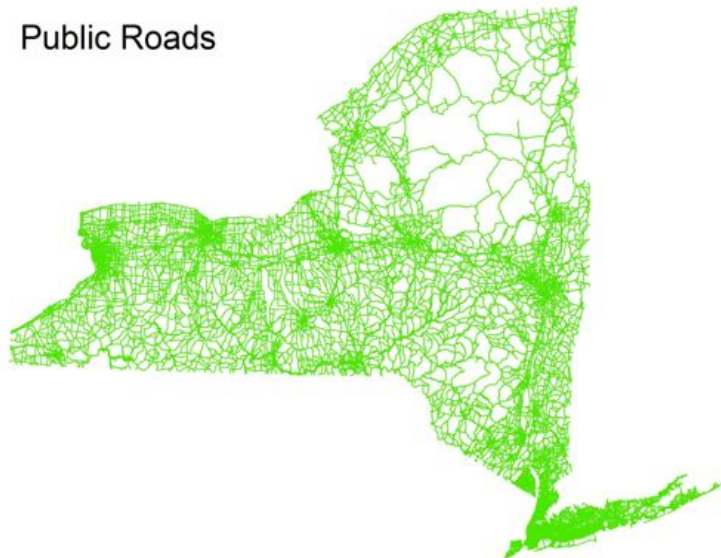
## New York State Thruway Authority - NHS Asset Owner



## Shared Responsibility

Pavement	NYSDOT	NYSTA	Locals
Interstate	68%	30%	2%
NHS	72%	10%	18%
Fed. Aid	55%	4%	42%
Non-FA	16%	1%	83%
Total - LM	38,8000	2,450	170,000

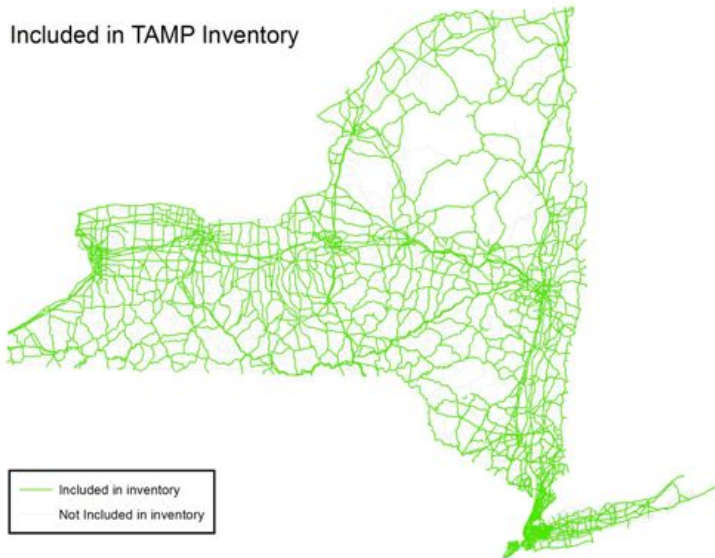
Public Roads



## Included in TAMP Inventory

Pavement	NYSDOT	NYSTA	Locals
Interstate	68%	30%	2%
NHS	72%	10%	18%
Fed. Aid	55%	4%	42%
Non-FA	16%	1%	83%
Total - LM	38,8000	2,450	170,000

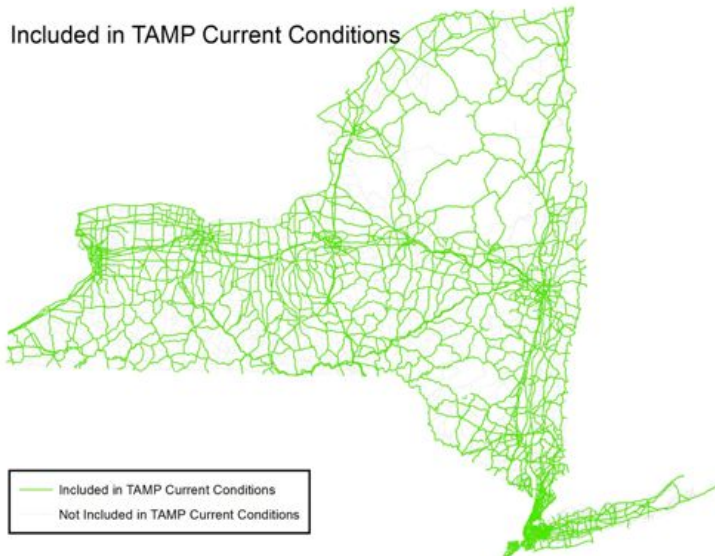
Included in TAMP Inventory



## Included in TAMP Current Conditions

Pavement	NYSDOT	NYSTA	Locals
Interstate	68%	30%	2%
NHS	72%	10%	18%
Fed. Aid	55%	4%	42%
Non-FA	16%	1%	83%
Total - LM	38,8000	2,450	170,000

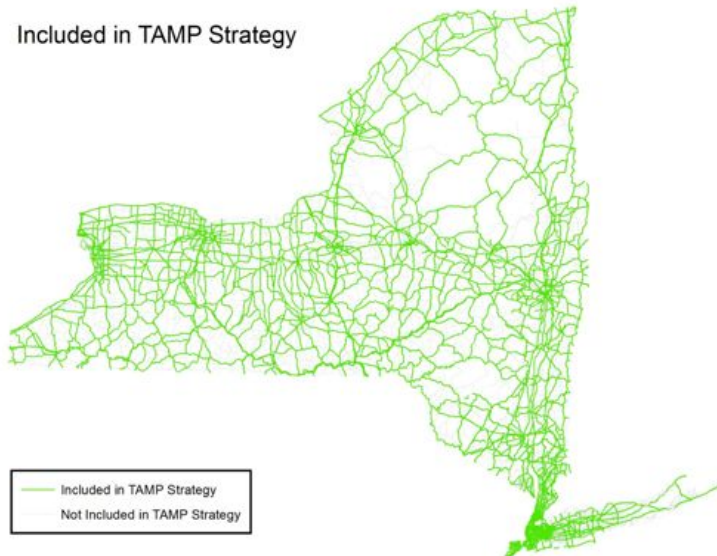
Included in TAMP Current Conditions



## Included in TAMP Strategy

Pavement	NYSDOT	NYSTA	Locals
Interstate	68%	30%	2%
NHS	72%	10%	18%
Fed. Aid	55%	4%	42%
Non-FA	16%	1%	83%
Total - LM	38,8000	2,450	170,000

Included in TAMP Strategy



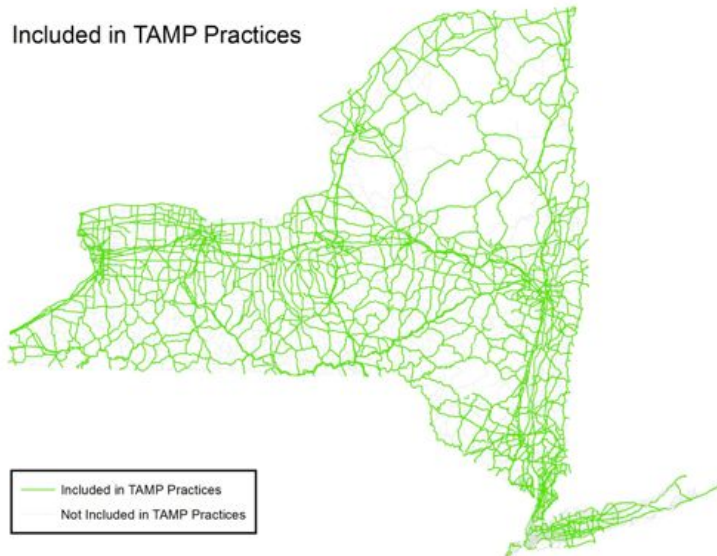
— Included in TAMP Strategy  
— Not Included in TAMP Strategy



## Included in TAMP Practices

Pavement	NYSDOT	NYSTA	Locals
Interstate	68%	30%	2%
NHS	72%	10%	18%
Fed. Aid	55%	4%	42%
Non-FA	16%	1%	83%
Total - LM	38,8000	2,450	170,000

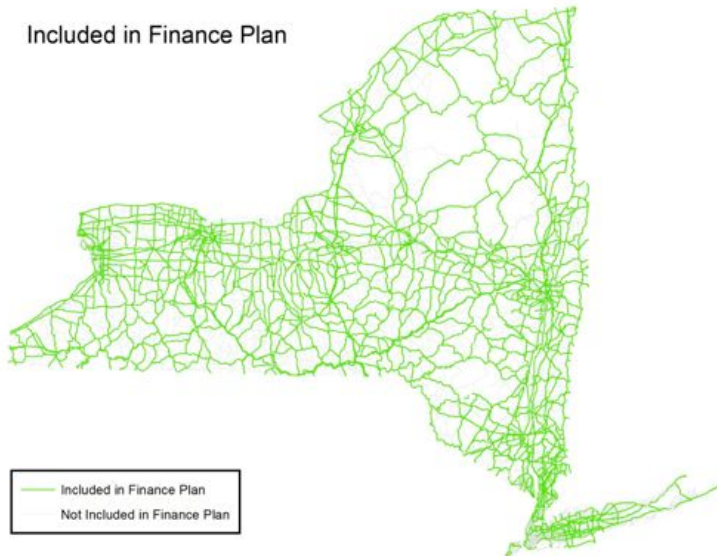
Included in TAMP Practices



## Included in TAMP Finance Plan

Pavement	NYSDOT	NYSTA	Locals
Interstate	68%	30%	2%
NHS	72%	10%	18%
Fed. Aid	55%	4%	42%
Non-FA	16%	1%	83%
Total - LM	38,8000	2,450	170,000

Included in Finance Plan

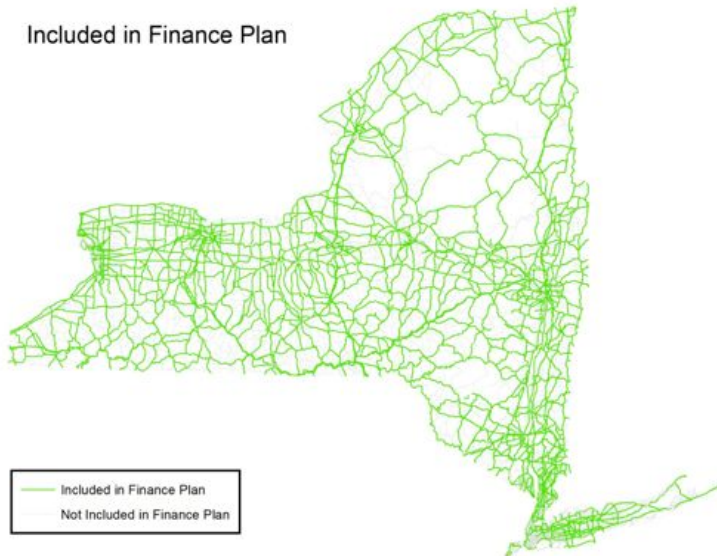




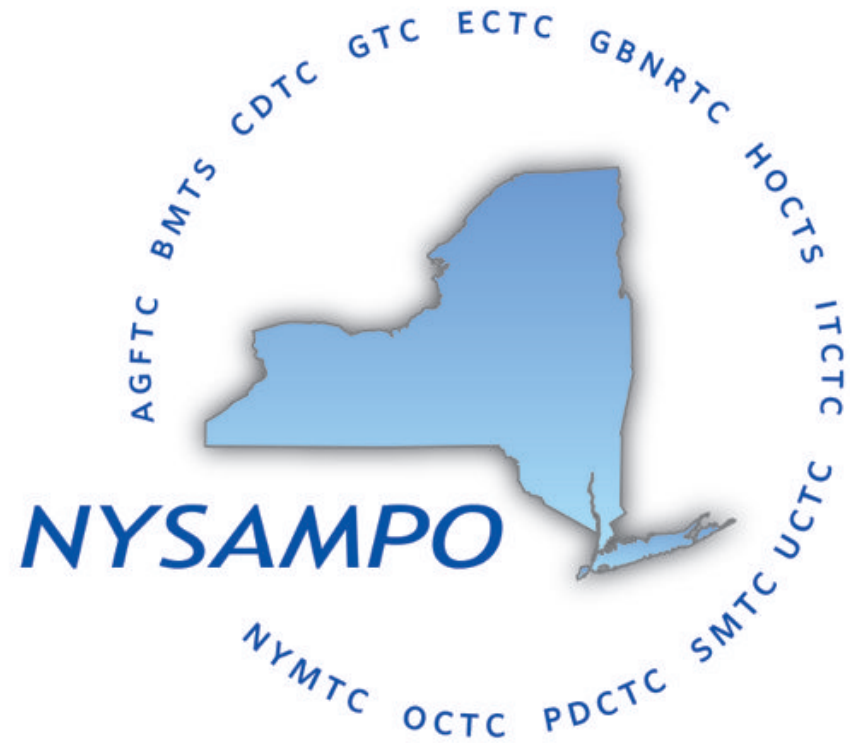
## Included in TAMP Performance

Pavement	NYSDOT	NYSTA	Locals
Interstate	68%	30%	2%
NHS	72%	10%	18%
Fed. Aid	55%	4%	42%
Non-FA	16%	1%	83%
Total - LM	38,8000	2,450	170,000

Included in Finance Plan



# NYSDOT – NYSAMPO Planning Program Integration



## MPO / NYSDOT Working Groups

- Bicycle/Pedestrian Working Group
- Climate Change Working Group
- Freight Working Group
- GIS Working Group
- Management & Operations Working Group
- Modeling Working Group
- Safety Working Group
- Transit Working Group
- **MAP-21 Working Group**



# Notice of Proposed Rulemakings (NPRMs) - July 2014

<http://www.dot.gov/regulations/report-on-significant-rulemakings>

Rule	Comment Period Opens	Comment Period Ends
Highway Safety Program Grants	COMPLETE	COMPLETE
FTA ANPRM*	COMPLETE	COMPLETE
CMAQ Program Interim Guidance	COMPLETE	COMPLETE
Safety Performance Measure (Rule 23)	COMPLETE	COMPLETE
Highway Safety Improvement Program (Rule 29)*	COMPLETE	COMPLETE
FHWA/FTA Metropolitan and Statewide Planning (Rules 25 and 60)	June 2, 2014	Comments Due September 2, 2014
CMAQ Weighting Factors (Rule 31)	August 4, 2014	Comments Due October 3, 2014
Pavement/Bridge Performance Measure (Rule 26)	Expected October 24, 2014	Expected January 24, 2015
Asset Management Plan (Rule 30)*	Expected October 24, 2014	Expected January 24, 2015
System Performance Measure (Rule 27)	Expected December 5, 2014	Expected March 5, 2015

\* 60 day comment period



# **NYSDOT / MPOs NPRM Comment Coordination**





# Managing NHS Assets Not Owned by the State - The California Challenge

**Steve Guenther, California DOT (Caltrans)**

August 13, 2014

# National Highway System (NHS)

- ❑ Roadways important to the nation's economy, defense & mobility
- ❑ All of the principal arterials
- ❑ Some minor arterials and
- ❑ Collectors--mostly intermodal connectors

# California

- ▣ Population = 38.3 Million
- ▣ Caltrans Annual Budget = \$12.7 Billion
- ▣ Number of Caltrans Employees = 18,979
- ▣ Divided into 12 Districts
- ▣ Number of MPO's = 18
- ▣ Over 600 local entities



# MAP – 21 Enhanced NHS in CA

## □ MAP-21 Impact to the California National Highway System (NHS)

Local Principal Arterials		Pre - October 1 2012				Post - October 1 2012	
		NHS		Non NHS		Enhanced NHS*	
		(CL)	(LM)	(CL)	(LM)	(CL)	(LM)
Principal Arterials	Interstate	-	-	-	-	-	-
	Freeways & Expressways	-	-	100	200	100	200
	Principal Arterials	100	400	5,400	22,300	5,500	22,700
	<b>Total</b>	<b>100</b>	<b>400</b>	<b>5,500</b>	<b>22,500</b>	<b>5,600</b>	<b>22,900</b>
Non Principal Arterials	Minor Arterial	50	150	11,900	32,000	50	150
	Major Collector	50	110	23,200	48,400	50	110
	Minor Collector	-	-	8,100	18,200	-	-
	Local	3	9	105,400	218,600	3	9
	<b>Total</b>	<b>100</b>	<b>270</b>	<b>151,600</b>	<b>314,300</b>	<b>100</b>	<b>270</b>

Note: \* NHS as of October 1, 2012 as implemented by MAP-21

# California NHS

- 14,346 centerline miles of NHS public road
- Accounts for 8% of some 176,800 centerline miles of public roads in CA
- It is about a 60/40 ratio of State to non-State NHS

<u>Miles</u>	<u>Percent</u>	
8690	60.6%	State Highway System
5657	39.4%	Local Road Systems
14346		Total CL mileage of NHS

# California NHS

## IRI Measurements- Annual

<u>Centerline</u>	<u>IRI Collected</u>	<u>% IRI Collected</u>	<u>Missing</u>
State NHS 8,690	4,740	55%	3950
Local NHS 5,657	4,160	74%	1497
14,346	8,900	62%	

# Pavement Data Collection

- Pending Contract to collect remaining data for the State and Local NHS.
- Bid and Awarded in the next 2-3 months.
- Once contract is finalized, data collection can start when the vendor passes a Caltrans IRI certification.
- One year to collect one cycle of data.
- This contract includes two cycles of data collection.

# Bridge Data Collection

- Enhanced NHS as defined under MAP-21 added over 3,000 bridges to the new NHS. The new breakdown of the NHS inventory of bridges is as follows:

Functional Classifications	State Owned Bridges	Locally Owned Bridges
<b>Interstate and Principle Arterials</b> (functional classifications 01,02,11,12 and 14)	10,618 Bridges	1,550 Bridges
<b>Minor Arterial - Collector</b> (functional classifications 06,07,16 and 17)	2,502 Bridges	4,764 Bridges
<b>Minor Collector - Local</b> (functional classifications 08,09 and 19)	754 Bridges	5,588 Bridges

# Bridge Data Collection

- State owns just over 90% of the NHS bridge area
- Local agencies own the remaining 10% of the NHS bridge area
- The State collects data for 100% of the bridges in California.

# Managing the California NHS

**Objective: To engage local agencies and governments to develop a strategy to fulfill MAP-21 requirements and manage assets on the enhanced NHS**

- **Goals**
  - Performance Measures for Pavement and Bridge
    - Educating and Commenting on the NPRM
    - Once Final NPRM, Develop Strategy on How to Implement Rules
- **Challenges**
  - How does Caltrans handle decisions on assets we do not own?
  - How to engage 600+ agencies to participate in the process?
- **Recruit Team Members from Local Agencies and Districts**
  - Transportation Co-Op Committee (TCC)
  - CEAC, LCC , CSAC and HBP Advisory Committee



# Thank you

[steve.guenther@dot.ca.gov](mailto:steve.guenther@dot.ca.gov)

California Department of Transportation

(916) 654-6076



# Webinar 11: Managing NHS Assets Not Owned by the State



## Overview of Michigan's Transportation Asset Management Council

August 13, 2014

Presentation by  
Brian Sanada  
Dave Berridge



[www.michigan.gov/tamc](http://www.michigan.gov/tamc)

## Presentation Outline

- Formation, Charge & Goal of Michigan's Transportation Asset Management Council (TAMC)
- Annual Reporting, PASER Data Collection & Use
- Asset Management Guidance & Training Efforts
- TAMP - What's Next?
- Questions?

---

[www.michigan.gov/tamc](http://www.michigan.gov/tamc)

## Formation, Charge & Goal of the “TAMC”

- **P.A. 499 of 2002 defined “*Asset Management*” as an “ongoing process of maintaining, upgrading, and operating physical assets cost-effectively, based on a continuous inventory and condition assessment.”**
- **P.A. 499 of 2002 also formed Michigan’s Transportation Asset Management Council (TAMC) in order to provide a coordinated, unified effort by the various roadway agencies within the state to advise Michigan’s State Transportation Commission on a statewide asset management strategy.**
- **TAMC Goal Statement: the Transportation Asset Management Council will support excellence in managing Michigan’s transportation infrastructure by:**
  - **Advising the State Legislature and State Transportation Commission on a Statewide Asset Management Strategy.**
  - **Promoting Asset Management Principles Statewide.**
  - **Providing Asset Management Tools and Best Practices for Road Agencies.**



---

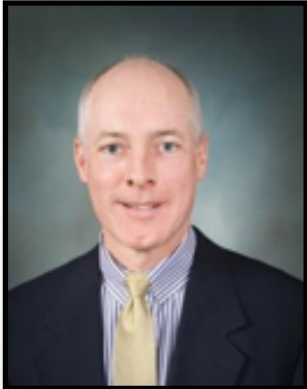
**[www.michigan.gov/tamc](http://www.michigan.gov/tamc)**

# Transportation Asset Mgmt. Council Membership

*Representing over 1,900 agencies that have a stake in Michigan's infrastructure*



Carmine Palombo  
MTPA



John Egelhaaf  
MAR



Roger Safford  
MDOT



Dave Wresinski  
MDOT



Donald Disselkoen  
MAC



Rob Surber  
CSS



Bill McEntee  
CRAM



Joanna Johnson  
CRAM



Bob Slattery  
MML



Dale Kerbyson  
MML



Jennifer Tubbs  
MTA

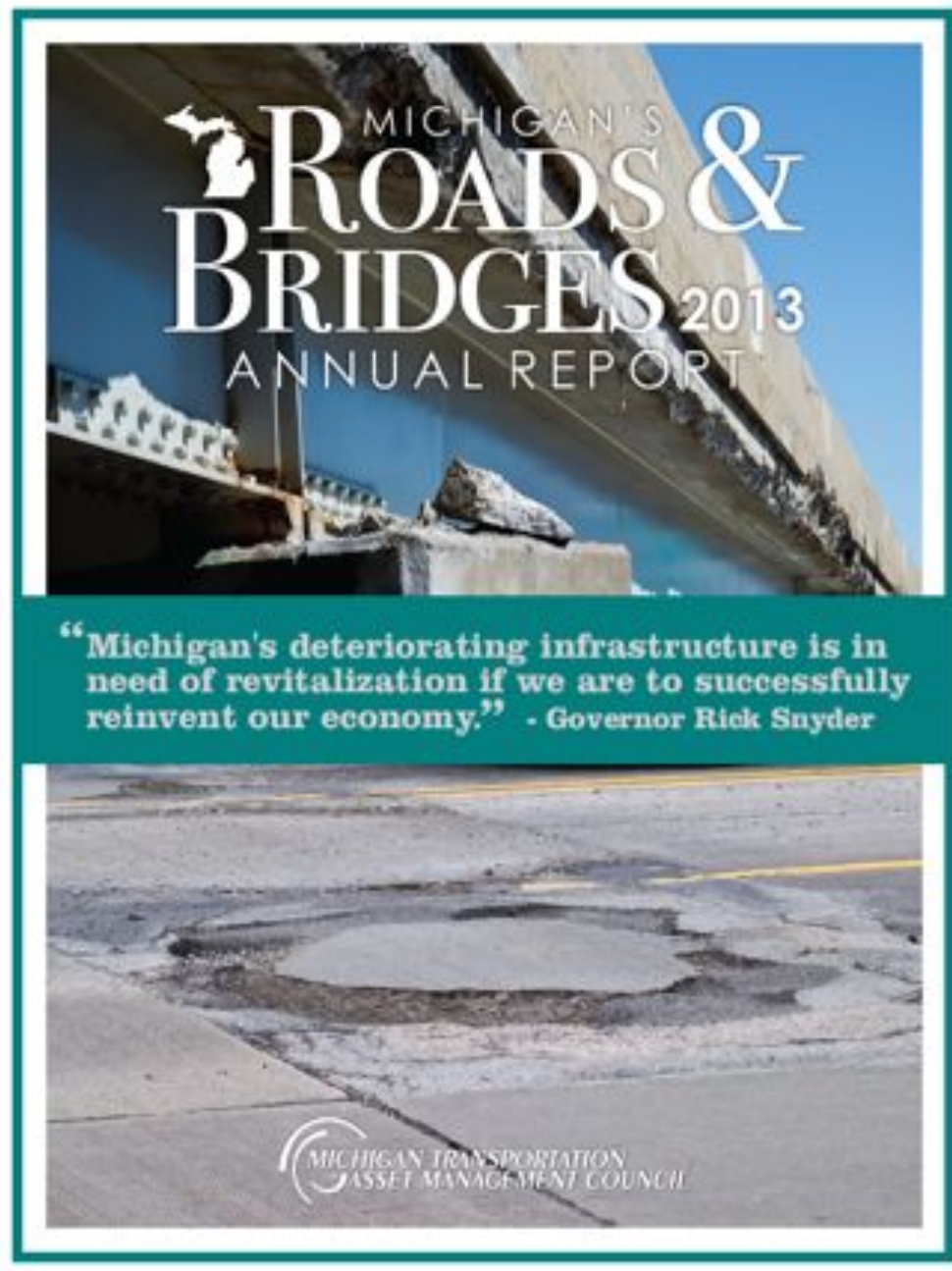


Brian Sanada  
TAMC Coordinator



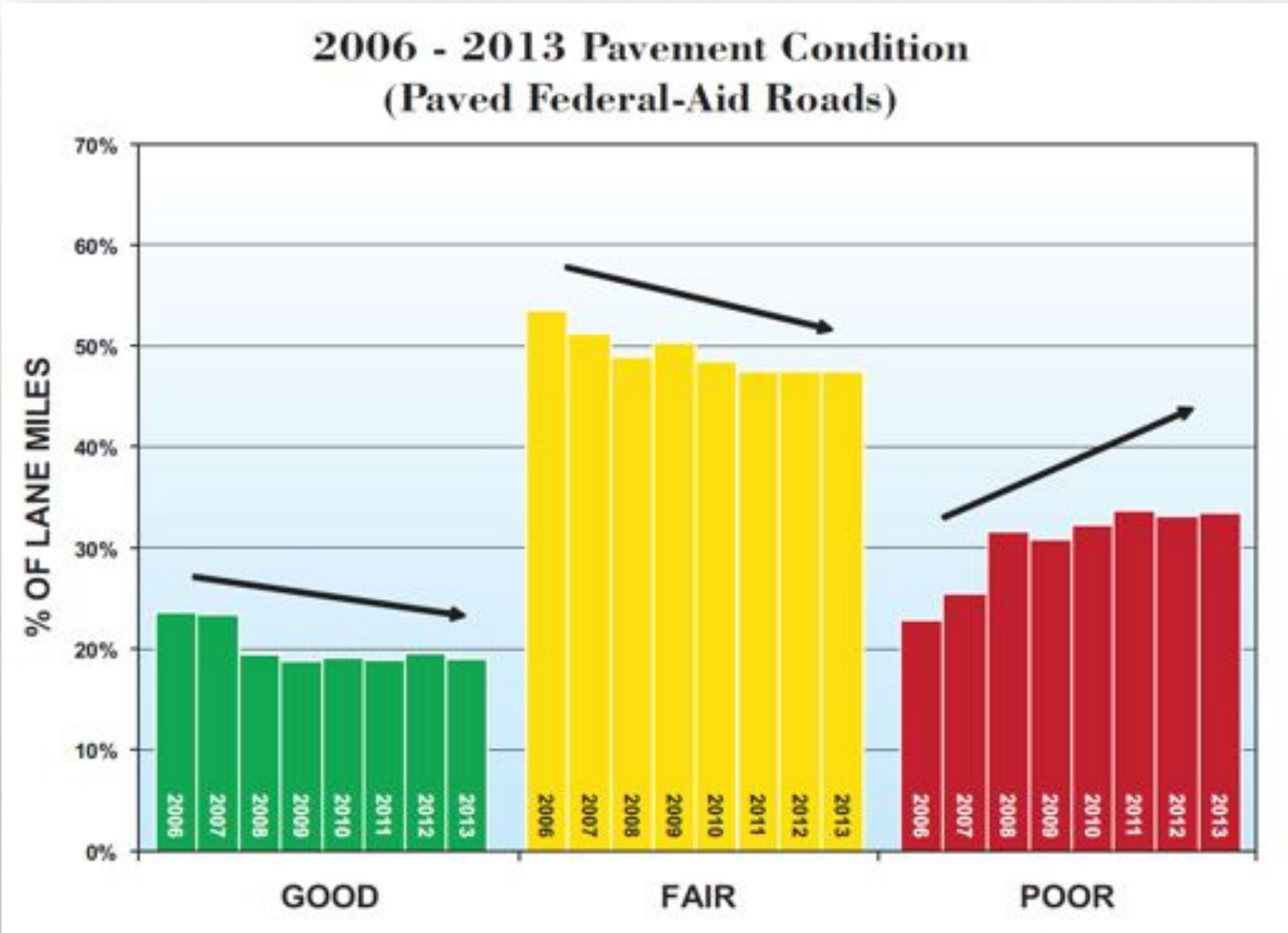
[www.michigan.gov/tamc](http://www.michigan.gov/tamc)

# Annual Reporting to Legislature



[www.michigan.gov/tamc](http://www.michigan.gov/tamc)

# PASER Condition – Federal-Aid System



# PASER-Pavement Surface Evaluation &



MICHIGAN TRANSPORTATION  
ASSET MANAGEMENT COUNCIL

Rating

**GOOD**

**FAIR**

**POOR**



**PASER = 10, 9, 8**

**PASER = 7, 6, 5**

**PASER = 4, 3, 2, 1**

## Routine Maintenance

- Crackseal
- Minor Patching

## Preventive Maintenance

- Crackseal
- Patching
- Surface Treatment
- Concrete Joint Repair

## Rehab/Reconstruct

- Resurface
- Structural Overlay
- Replace Concrete Slab
- Complete Reconstruct

# Annual Training & Data Collection Effort

## TRAINING



**350-400 Individual Raters**

- **Counties**
- **Cities & Villages**
- **MDOT**
- **Regional & Metro Planning**

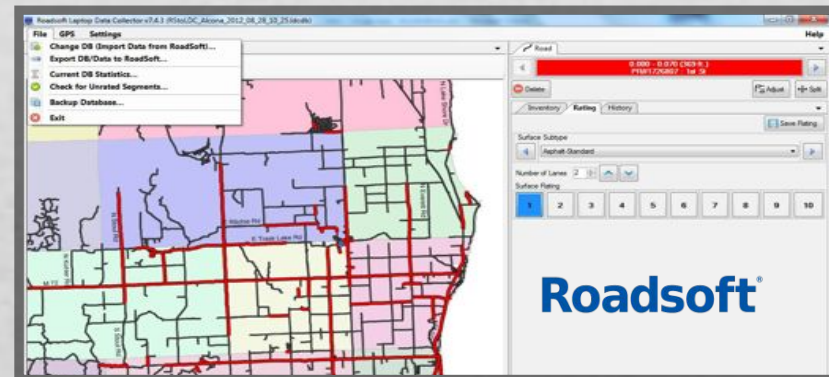


## DATA COLLECTION



**Split into teams of 3 that rate  $\frac{1}{2}$  of the federal-aid system per year**

**TAMC also budgets to rate  $\frac{1}{3}$  of the (paved) non-fed-aid per year**



**[www.michigan.gov/tamc](http://www.michigan.gov/tamc)**

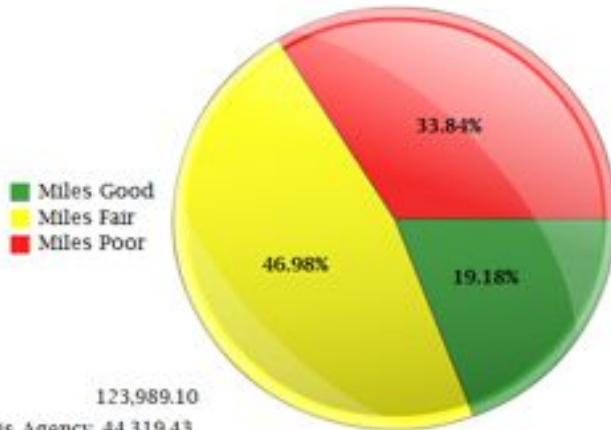


# Performance Measure Dashboards

## Condition of Federal-Aid Paved Roads



Year: 2012 - 2011  
 Geographic Area: State  
 Name: State of Michigan  
 Jurisdiction Type: All Roads  
 Percent of Lane Miles  
 Centerline Miles  
 Lane Miles

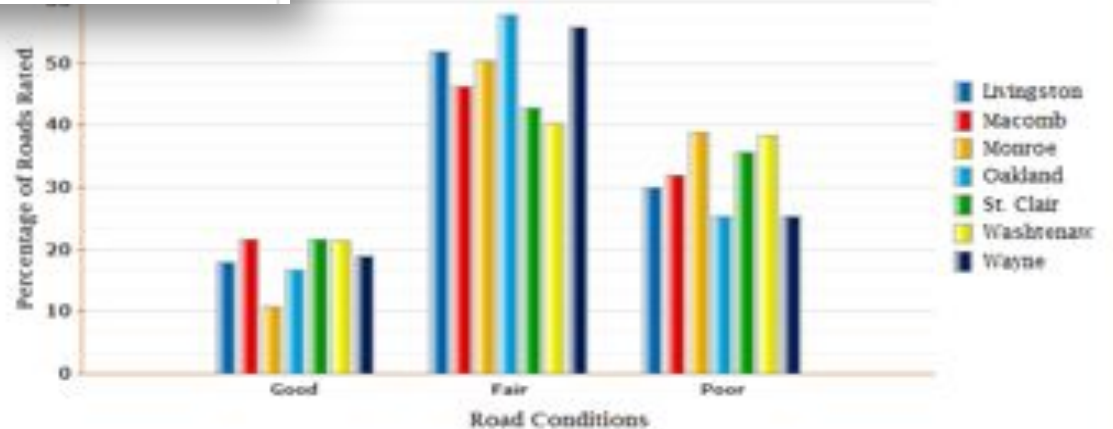


Centerline Miles Owned by this Agency: 123,989.10  
 Federal-Aid Centerline Miles Owned by this Agency: 44,319.43  
 Federal-Aid Centerline Miles Rated: 39,357.06



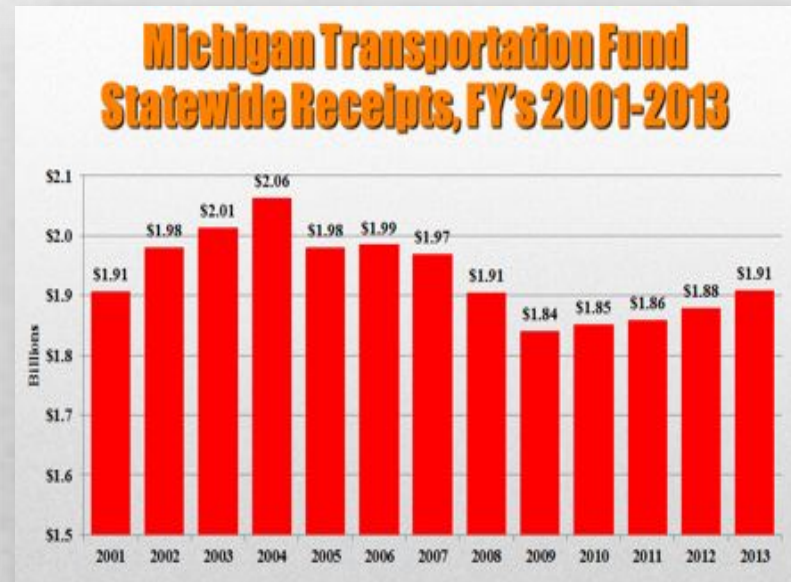
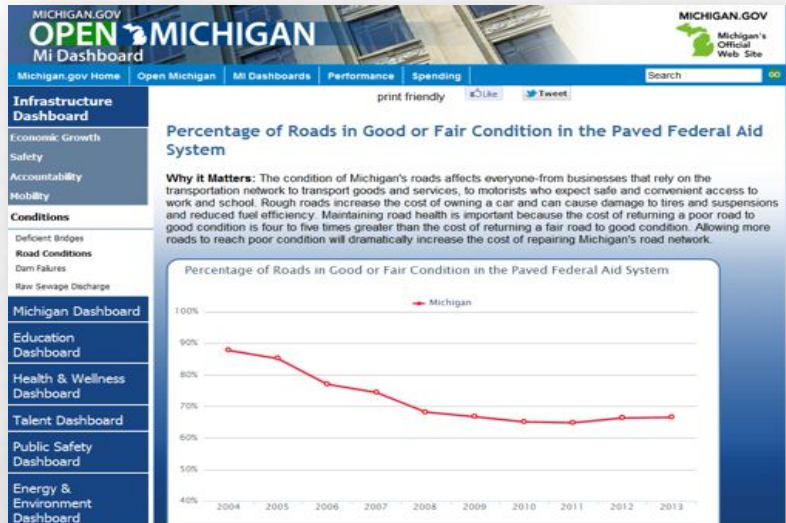
## Jurisdiction "Pavement Condition" Comparison Tool

Percentages  
 Lane Miles  
 Centerline Miles



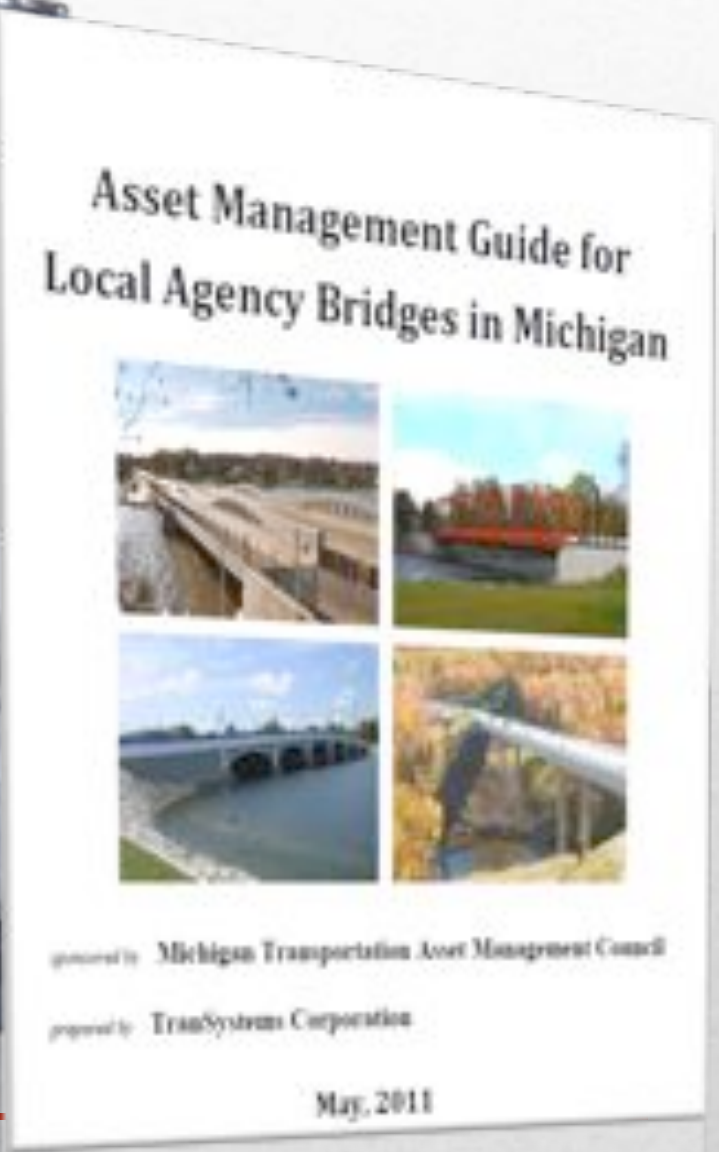
[www.michigan.gov/tamc](http://www.michigan.gov/tamc)

# Fueling the Discussion on Road Funding



[www.michigan.gov/tamc](http://www.michigan.gov/tamc)

# Asset Management Guidance for Local Agencies



[www.michigan.gov/tamc](http://www.michigan.gov/tamc)

# Asset Management Training for Local Agencies



- **TAMC Annually Offers:**
  - **2 Asset Management Conferences**
  - **10 Intro to Asset Management for Local Elected & Appointed Officials Workshops**
  - **6 Asset Management Plan Workshops**
  - **10 PASER Trainings**
  - **10 Investment Reporting Trainings**
- **In 12+ years, the TAMC has trained over 8,000 individuals**
- **Which equals an educated network of local agencies that grasp and promote the principles of asset management statewide**



[www.michigan.gov/tamc](http://www.michigan.gov/tamc)

# TAMP – What's Next?

- **Long Term Goal to include all Federal Aid facilities**
- **Plan will be developed in phases**
  - **MAP-21 Compliance +**
    - **All NHS Pavements and Bridges (State and Local)**
      - **State – 5,300 and Local – 1,200 (route miles)**
    - **State Federal Aid Non-NHS**
  - **Additional State Assets**
    - **Mature Assets such as culverts and ITS**
    - **Additional Enterprise Assets as the management systems mature**
  - **Local Federal Aid Non-NHS**

# TAMP – What's Next?

- **TAMC will be critical to TAMP success**
  - **It reaches all parties through one contact**
    - **County Road agencies**
    - **Cities and Villages**
    - **MPOs**
  - **84 jurisdictions – 18 counties and 66 cities – have a portion of the NHS in Michigan**
- **Next step is to engage a consultant to assist in TAMP preparation**

---

**[www.michigan.gov/tamc](http://www.michigan.gov/tamc)**

**Questions?**

*Thank You!*

**Brian Sanada, TAMC Coordinator**  
**(517) 373-2220 / sanadab@michigan.gov**

**Dave Berridge, Special Projects Coordinator**  
**(517) 373-8090 / berridged1@michigan.gov**

---

**[www.michigan.gov/tamc](http://www.michigan.gov/tamc)**

# Ohio DOT State-MPO Relationships





# Local System

---

- 937 cities and villages
- 1,109 law enforcement agencies
- 88 counties
- 28,942 bridges
- 70,500 miles of roads
- 3000 miles of bike paths
- 159 public use airports
- 12<sup>th</sup> highest transit ridership in U.S.



# Collaborating with Locals

---

- Asset Management
- Funding Opportunities – Infrastructure
- Training for local staff
- Partners
  - Transportation Stakeholders
  - FHWA, FTA
  - MPOs
  - CEAO, Municipal League
  - ODOT's LPA Advisory Council

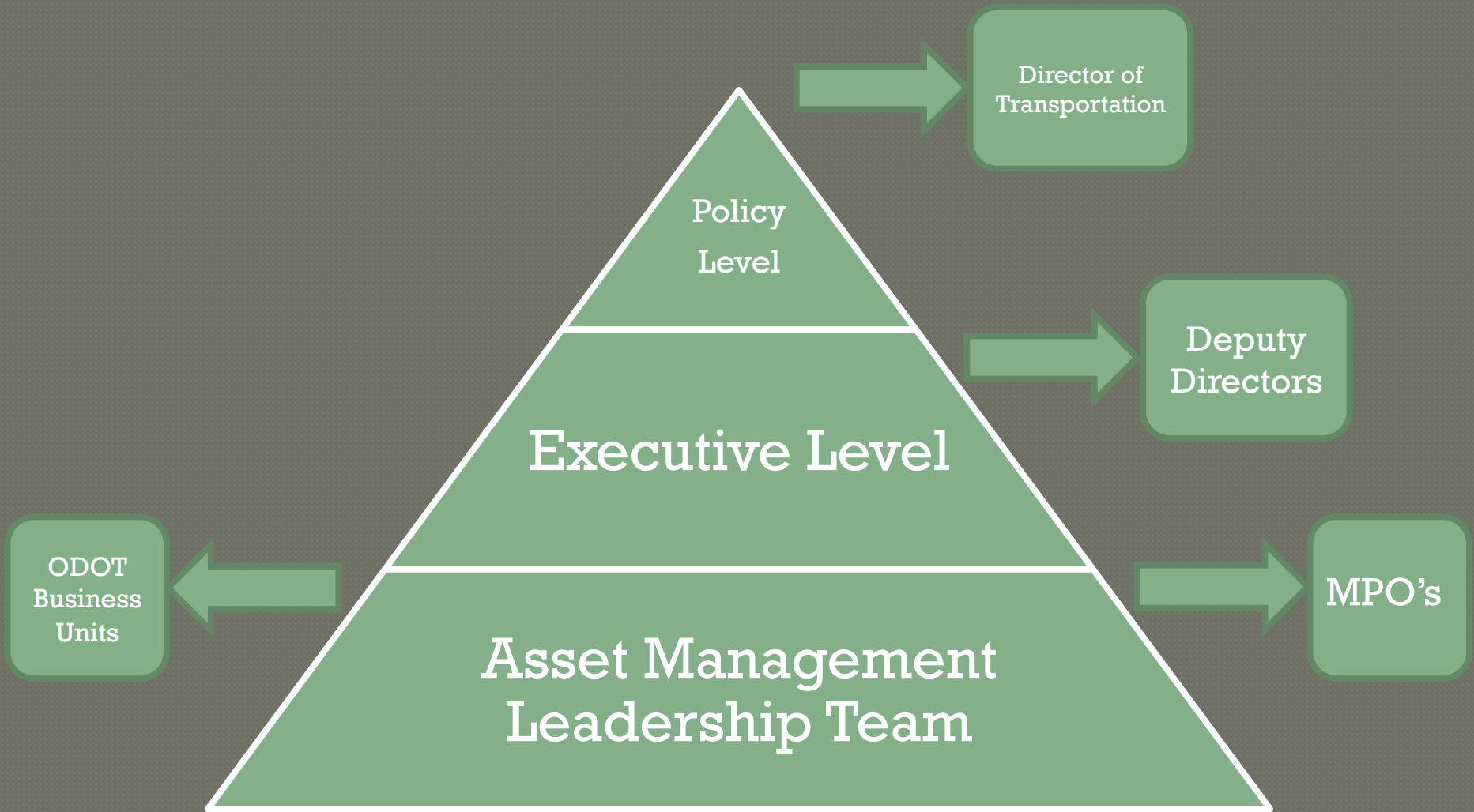


# TAM Support for MPO's

---

- Pavement Condition Ratings on all Off State Federal Aid Eligible Routes (11,540 mi.) including NHS & Intermodal Connectors
- Geo-Spatial (.shp) Files Of Asset Condition and Road Inventory attributes
- Traffic Counts (Over 18,000 counts have been taken on the off State System)

# Asset Management Leadership Team



# ODOT Count Data Reporting (Future)

**OHIO DEPARTMENT OF TRANSPORTATION**  
 Transportation Data Management System

Home | IMC | TDCS | EIDS | TMS | TMS2 | TMS3 | TMS4 | TMS5 | TMS6 | TMS7 | TMS8 | TMS9 | TMS10 | TMS11 | TMS12 | TMS13 | TMS14 | TMS15 | TMS16 | TMS17 | TMS18 | TMS19 | TMS20 | TMS21 | TMS22 | TMS23 | TMS24 | TMS25 | TMS26 | TMS27 | TMS28 | TMS29 | TMS30 | TMS31 | TMS32 | TMS33 | TMS34 | TMS35 | TMS36 | TMS37 | TMS38 | TMS39 | TMS40 | TMS41 | TMS42 | TMS43 | TMS44 | TMS45 | TMS46 | TMS47 | TMS48 | TMS49 | TMS50 | TMS51 | TMS52 | TMS53 | TMS54 | TMS55 | TMS56 | TMS57 | TMS58 | TMS59 | TMS60 | TMS61 | TMS62 | TMS63 | TMS64 | TMS65 | TMS66 | TMS67 | TMS68 | TMS69 | TMS70 | TMS71 | TMS72 | TMS73 | TMS74 | TMS75 | TMS76 | TMS77 | TMS78 | TMS79 | TMS80 | TMS81 | TMS82 | TMS83 | TMS84 | TMS85 | TMS86 | TMS87 | TMS88 | TMS89 | TMS90 | TMS91 | TMS92 | TMS93 | TMS94 | TMS95 | TMS96 | TMS97 | TMS98 | TMS99 | TMS100

Quick Search | Advanced Search | Map Search | Tools

**TDCS Quick Search**

County:

Community:

Located On (Road):

Location ID:

Count Year:

Search | Clear

**Station Data**

Station Type	Continuous	Short	WIM
Total	130	43,236	23
AAST	0	24,872	0
Volume	1	0	0
Class	1	0	0
Speed	1	0	0
Gap	0	0	0
WIM	0	0	0

**Percent of Data by Type**

Bar chart showing the distribution of data types: AAST (24,872), Volume (0), Class (0), Speed (0), Gap (0), WIM (0).

**Traffic Volume Index and Growth Rate**

Line chart showing Volume Index (blue) and Growth Rate (orange) from 1997 to 2011. The Volume Index fluctuates around 1.0, while the Growth Rate is consistently near 0%.

**Map**

Map showing traffic count stations (blue squares) and their values (e.g., 16,348 (09), 5,184 (09), 16,843 (09), 8,685 (09), 27,806 (09), 5,906 (09), 6,581 (09), 10,829 (09), 15,419 (09)).

# TIMS

The screenshot displays the TIMS web application interface. On the left, a search panel allows users to find data by selection (layer: 'Asstical') or by location (county: 'Franklin'). A 'Submit' button is present, and it indicates that 1018 features are selected. The main map area shows a network of roads with numerous blue dots representing bridge locations. A 'Transportation Assets' panel on the right lists various asset types, with 'Bridges' checked. At the bottom, a data table provides detailed information for selected bridges.

Structure File No.	County	Route System	Rev...	Str...	Rev...	INVENT FEAT	Latitud...	Longit...	E...	B...	Wearing Surface	Man
2502300	FRANKLIN	United States Route	0040	0291	0040	W FORK OF HELLSBROOK RAN	39565967	83105158	13	72	BITUM (ASPHLT CONCR)	CC
2502306	FRANKLIN	State Route	00003	2526	00003	ALUM CREEK	40052876	82503267	14	52	BITUM (ASPHLT CONCR)	PR
2508802	FRANKLIN	State Route	00161	1063	00161	UNDER C&I RR	40011800	83000800	0	0	NOT APPLICABLE (CULVE)	ST
2508873	FRANKLIN			3870	0007	DUNL/DUNLAVIN RICKPSTONE PL	40055876	83064528	0	0	NOT APPLICABLE (CULVE)	CC
2517818	FRANKLIN			0880	00670	ROAD O-OVER JOHNSTOWN RD	40000076	82952096	64	53.7	INTEGRAL CONCRETE (MC	ST
2520602	FRANKLIN	County Road	00133	0136	00133	BIG WALNUT CREEK (ROWE)	39483796	82563239	0	35.7	INTEGRAL CONCRETE (MC	ST
2520306	FRANKLIN	County Road	00135	0022	00135	GROVE CITY DR/COLUMBUS	39525346	83045447	40	0	NOT APPLICABLE (CULVE)	CC

# Local Funding Programs

- Transportation needs exceed available funds – ODOT working to improve system by providing financial support
- ODOT provides \$200 m of discretionary funds to locals

<b>Current Local Funding Programs</b>	<b>Annual Funds (in millions)</b>
<b>Statewide MPO</b>	<b>\$179</b>
<b>County STP</b>	<b>\$14</b>
<b>CEAO HSIP</b>	<b>\$10</b>
<b>County Bridge</b>	<b>\$28</b>
<b>Ohio Bridge PP</b>	<b>\$40</b>
<b>City Bridge</b>	<b>\$4</b>
<b>Local Major Bridge</b>	<b>\$9</b>
<b>Small City</b>	<b>\$1</b>
<b>Trans. Alts. Program</b>	<b>\$11</b>
<b>Safe Routes to School</b>	<b>\$4</b>
<b>Municipal Bridge</b>	<b>\$4</b>
<b>Total</b>	<b>\$304</b>

# ODOT's Local-let Construction Program

---

- Provides flexibility to locals in administering projects
- ODOT works with MPOs and others such as CEAO to deliver program
- \$337.3 million awarded in SFY 2014
- 275 total projects
- 90% of projects awarded on-time or ahead of schedule



# Local Technical Assistance Program

---

Technical  
Training  
Sessions

Rural Road  
Safety Audit  
Assistance  
(RRSAA)

Circuit Rider  
Program

Route of  
Navigation  
(RON)

Publications  
Database /  
Transportation  
Library

# LTAP - Technical Training Sessions



**Vegetation Management**

- 215 Training Opportunities offered in SFY 2014
- Current Topics include:
  - Automated PCR Data Collection
  - Culvert Inventory & Inspection
  - Erosion & Sediment Control
  - Show Me the Money!
  - Storm Water Management
  - Transportation Asset Management
  - Work Zone Traffic Control & Safety

# Resources

---

## **ODOT Division of Planning**

<http://www.dot.state.oh.us/Divisions/Planning>

- [ODOT Program Resource Guide](#)
- ODOT Program and Contact Information

Jennifer Townley, Deputy Director

Division of Planning

[jennifer.townley@dot.state.oh.us](mailto:jennifer.townley@dot.state.oh.us)

# Questions?

- Submit your questions using the webinar's Q&A feature

# Next webinar: Transportation Asset Management Financial Plans

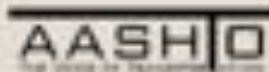
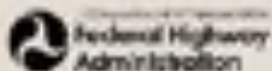
*October 8, 2014 2:00 EST*

Save the Dates!

A bimonthly webinar series, Wednesdays at 2:00 PM EST

*October 8, 2014 2:00 PM EST*

*Transportation Asset Management Financial Plans*



For more information or to register:  
<http://tam.transportation.org>